

iArmor[®]

IARMOR EDGE™

PART#: IA-W001

BEFORE INSTALLATION

REMOVE CONTENTS FROM BOX. VERIFY ALL PARTS ARE PRESENT. READ INSTRUCTIONS CAREFULLY BEFORE STARTING INSTALLATION. ASSISTANCE IS RECOMMENDED. THANK YOU FOR CHOOSING OUR PRODUCT!

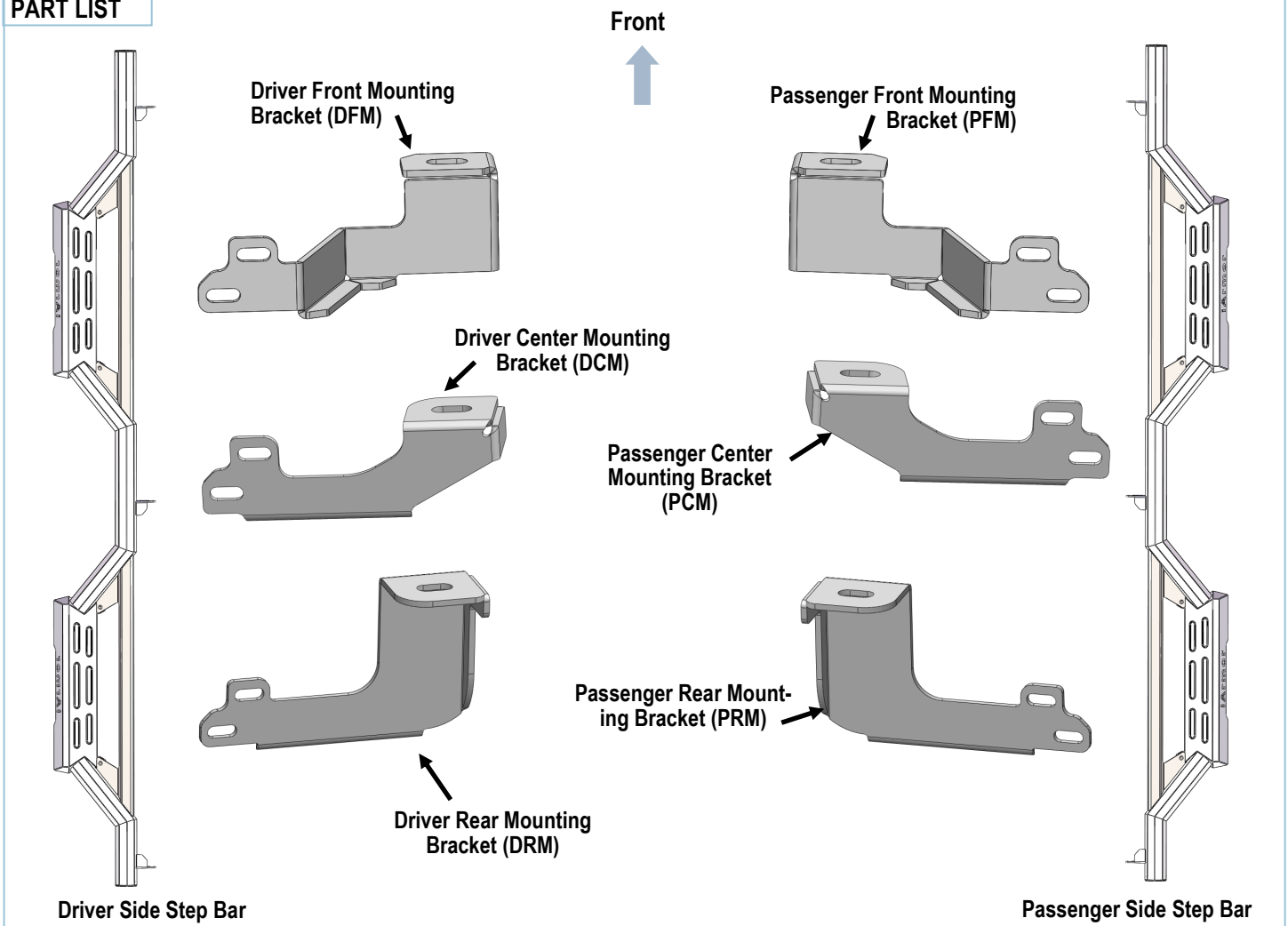
***BODY/ FRAME MOUNT**

***DRILLING/TRIMMING NOT REQUIRED**

Torque Value

Fastener Size	Tightening Torque (ft-lbs)	Required
6mm	6-7	X
8mm	16-18	X
10mm	31-32	√
12mm	56-58	X
14mm	92-94	X

PART LIST



Customer Support: info@iarmorauto.com

iArmor[®]

Hardware Package (For Brackets & Step Bars Installation)

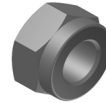
Item	QTY	Description	Item	QTY	Description
1#	12	M10X1.5-25 Hex Bolts	3#	12	M10X1.5 Nylon Lock Nuts
2#	24	M10 Flat Washers			



1#



2#



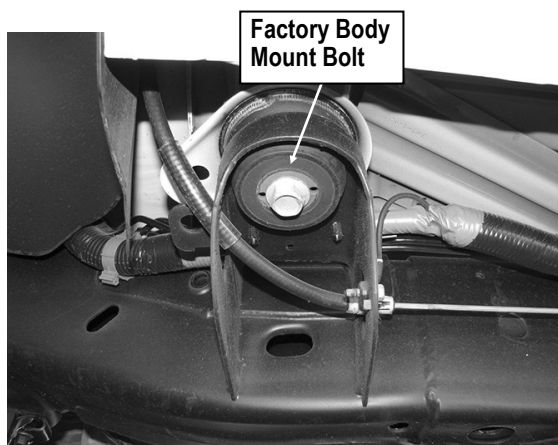
3#

iArmor®

The instruction here is for your reference only. We strongly recommend the professional installer for best result. We are not responsible for any damage caused by the installation.

STEP 1

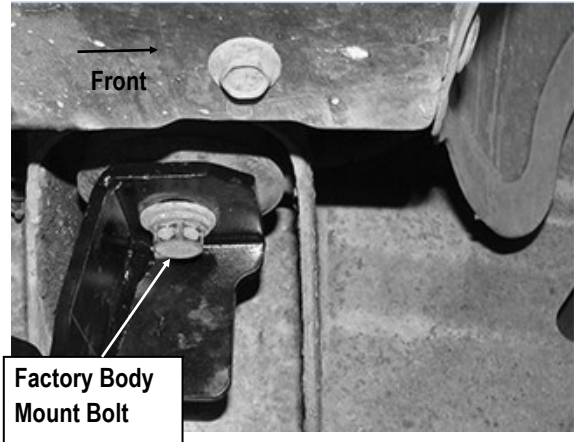
Start the installation under the passenger side of the vehicle. Remove the front body mount bolt, **(Fig 1)**. Do not remove rubber bushings.



(Fig 1) Passenger Side Front Mounting Location

STEP 2

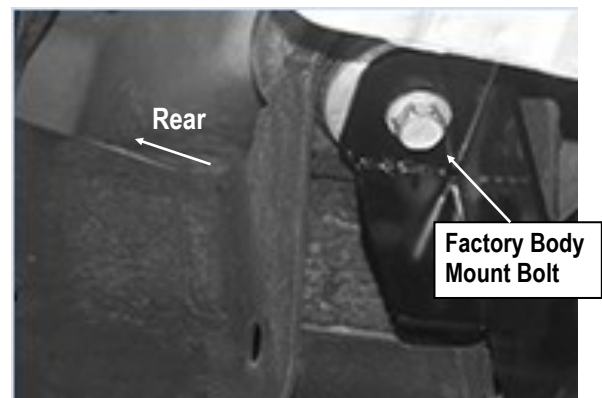
Attach the Passenger Front Mounting Bracket (**PFM**) to the body mount reusing the factory hex bolt, **(Fig 2)**. Do not fully tighten hardware at this time.



(Fig 2) Passenger Front Mounting Bracket Installed

STEP 3

Move to the passenger center & rear body mount and remove the factory bolt. Repeat **Step 2** to attach the Passenger Center and Rear Mounting Bracket (**PCM & PRM**). Do not fully tighten hardware at this time.



(Fig 3) Passenger Side Center Mounting Location

iArmor[®]

STEP 4

Once all (3) Mounting Brackets have been installed, attach the Passenger Side Step Bar to the Mounting Brackets with (6) M10X1.5-25 Hex Bolts, (12) M10 Flat Washers and (6) M10X1.5 Nylon Lock Nuts, (Fig 4). Do not fully tighten hardware at this time.

STEP 5

Properly level and adjust the Step Bar and fully tighten all hardware.

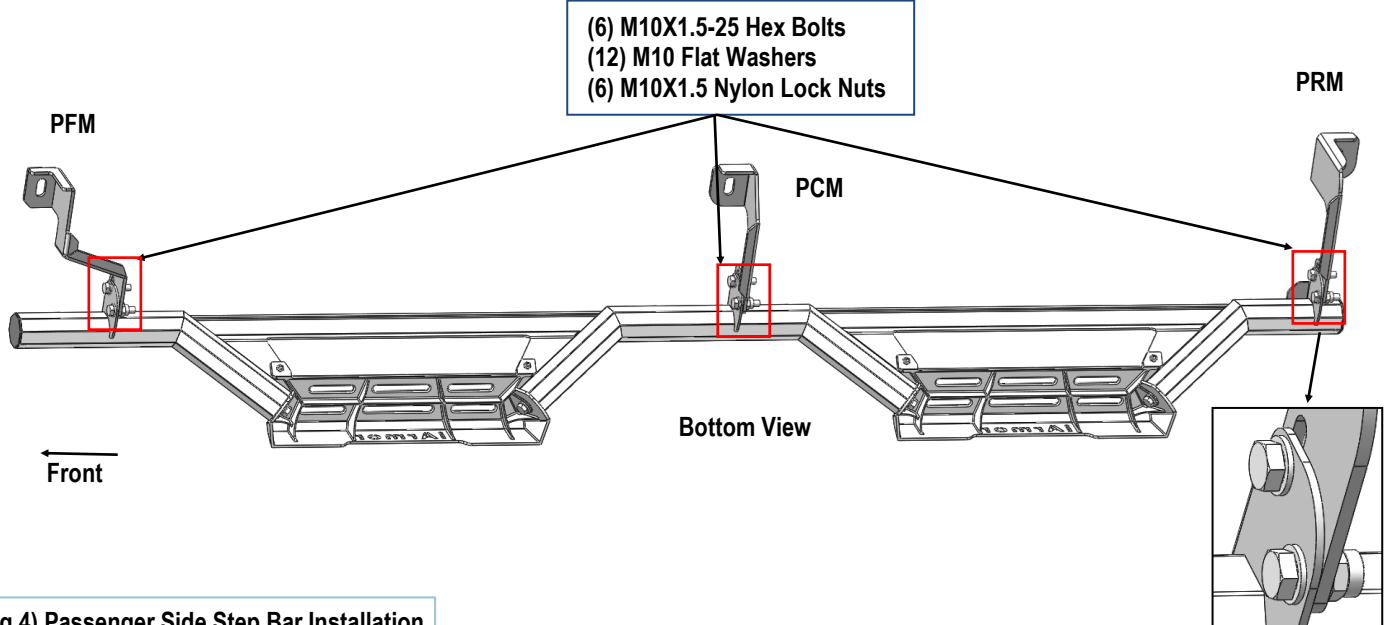
STEP 6

Move to the other side of the vehicle. Repeat **Steps 1-5** for the other Side Step Bar installation.

Attention

Do periodic inspections to the installation to make sure that all hardware is secure and tight.

In order to protect your bars/boards, please use mild soap/non-abrasive products for cleaning only.



(Fig 4) Passenger Side Step Bar Installation