

# iArmor®

## IARMOR EDGE™

PART#: IA-N239

### BEFORE INSTALLATION

REMOVE CONTENTS FROM BOX. VERIFY ALL PARTS ARE PRESENT. READ INSTRUCTIONS CAREFULLY BEFORE STARTING INSTALLATION. ASSISTANCE IS RECOMMENDED. THANK YOU FOR CHOOSING OUR PRODUCT!

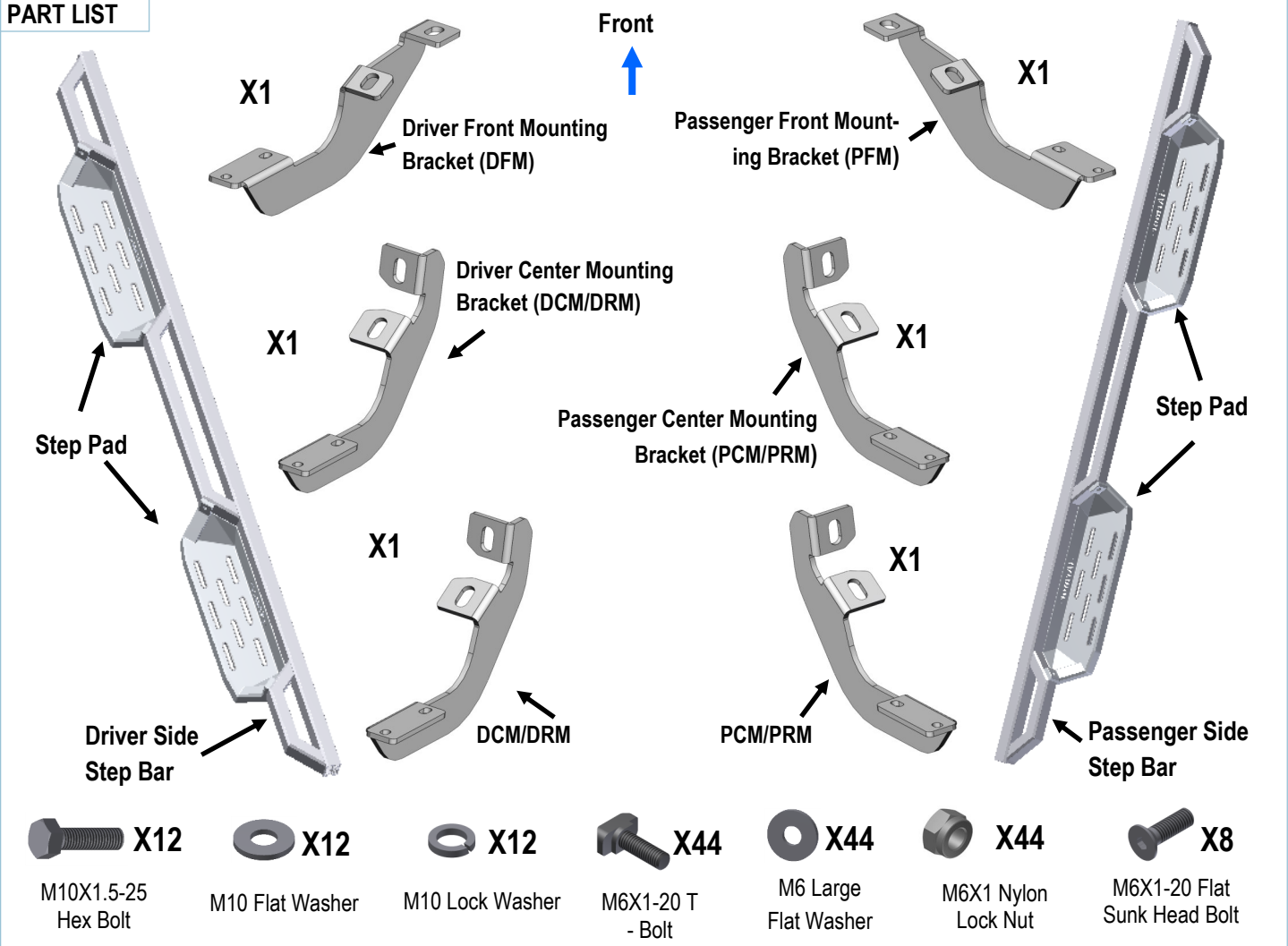
\*DRILLING NOT REQUIRED

\*TRIMMING NOT REQUIRED

### Torque Value

Fastener Size	Tightening Torque (ft-lbs)
6mm	6-7
8mm	16-18
10mm	31-32
12mm	56-58
14mm	92-94

### PART LIST



Customer Support: [info@iarmorauto.com](mailto:info@iarmorauto.com)

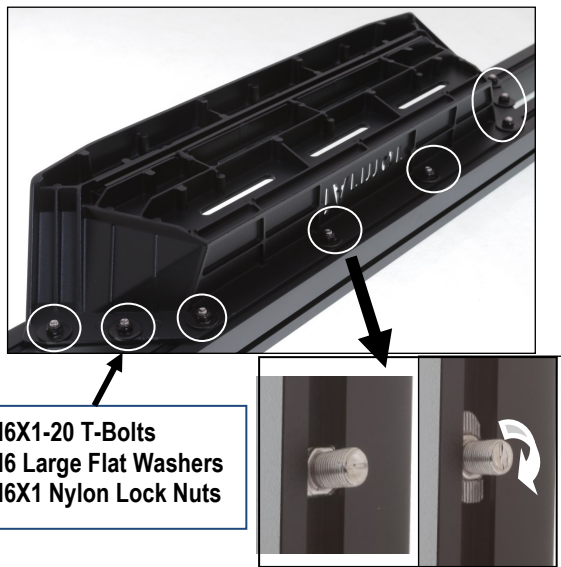
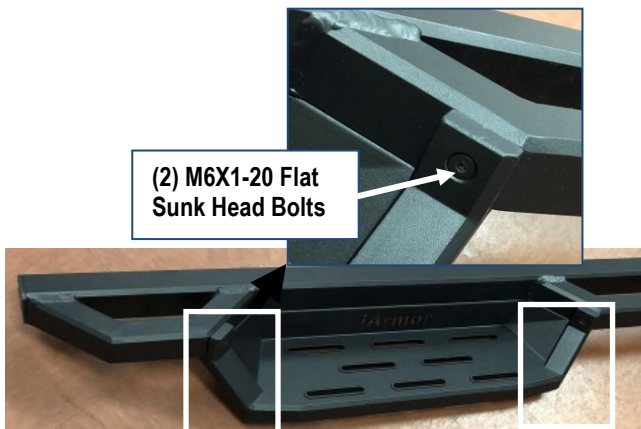
# iArmor®

The instruction here is for your reference only. We strongly recommend the professional installer for best result. We are not responsible for any damage caused by the installation.

## STEP 1

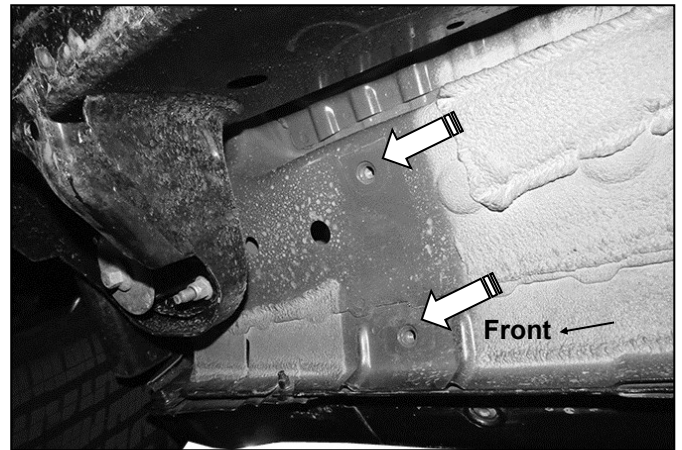
Install the Step Pads onto the step bars with (32) M6X1-20 T-Bolts, (32) M6 Large Flat Washers, (32) M6X1 Nylon Lock Nuts and (8) M6X1-20 Flat Sunk Head Bolts.

**IMPORTANT:** Don't hit the step pad by any metal hammer with-in step pad installation, or the step pad will be damaged.



## STEP 2

Start the installation under the passenger side of the vehicle. Locate the passenger side front mounting location along the inner side of the body, (Fig 1)

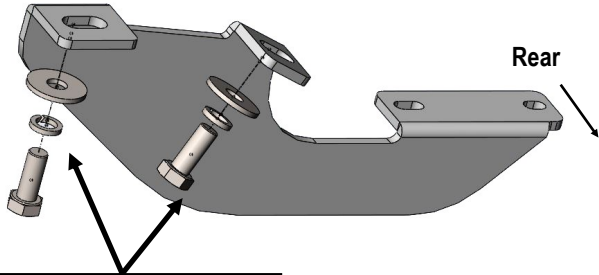


(Fig 1) Passenger Side Front Mounting Location

## STEP 3

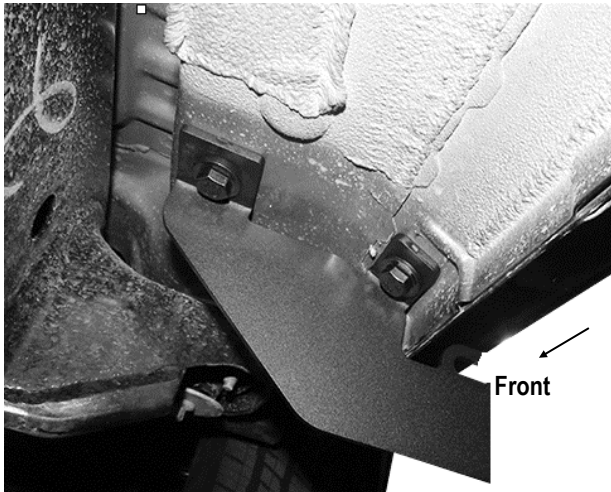
Remove the plastic plugs covering the mounting holes. Attach the Passenger Front Mounting Bracket (PFM) to passenger side front mounting location with (2) M10x1.5-25 Hex Bolts, (2) M10 Lock Washers and (2) M10 Flat Washers (Fig 2 & 3). Do not fully tighten hardware at this time.

# iArmor®



- (2) M10X1.5-25 Hex Bolts
- (2) M10 Flat Washers
- (2) M10 Lock Washers

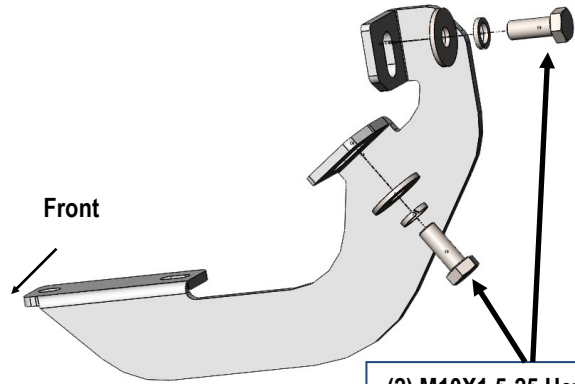
(Fig 2) Passenger Front Mounting Bracket (PFM) Installed



(Fig 3) Passenger Front Mounting Bracket (PFM) Installed

## STEP 4

Locate the passenger side center threaded mounting holes. Select and attach (1) Passenger Center Mounting Bracket (PCM/PRM) with (2) M10x1.5-25 Hex Bolts, (2) M10 Lock Washers and (2) M10 Flat Washers, (Fig 4). Do not fully tighten hardware at this time.



- (2) M10X1.5-25 Hex Bolts
- (2) M10 Flat Washers
- (2) M10 Lock Washers

(Fig 4) Passenger Center Mounting Bracket (PCM/PRM) Installed

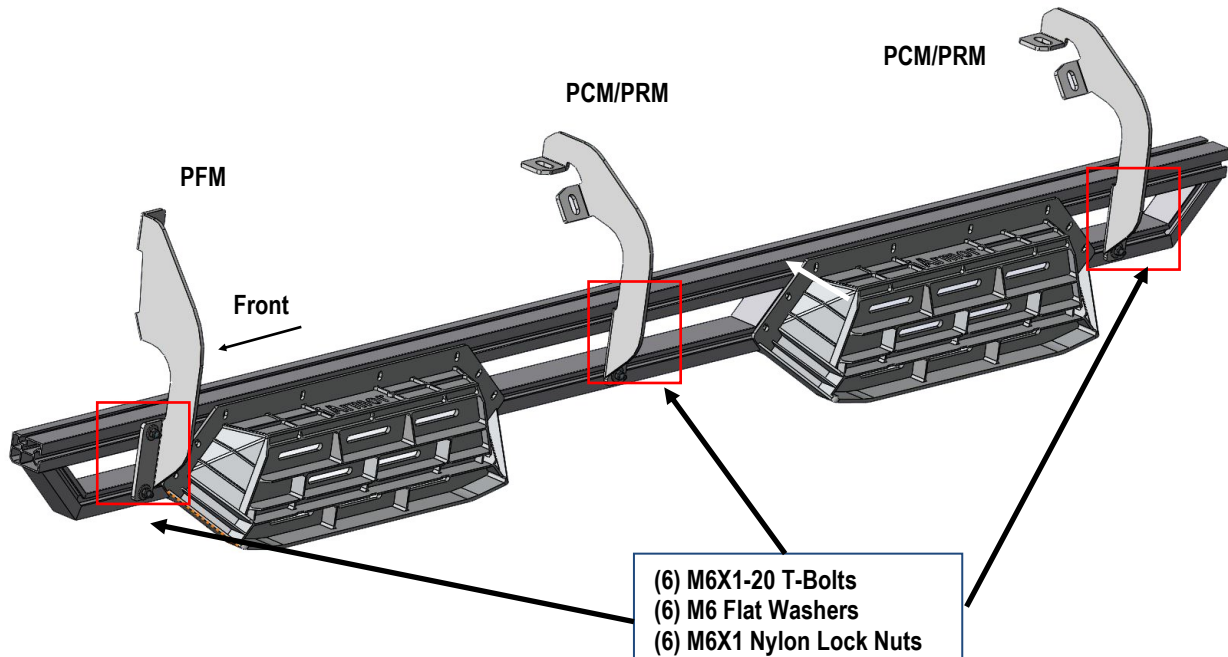
## STEP 5

Repeat **Step 4** to install Passenger Rear Mounting Bracket (PRM). Do not fully tighten hardware at this time.

**Note:** Passenger Center & Rear Mounting Bracket are universal.

## STEP 6

Once all (3) Mounting Brackets have been installed, attach the Assembled Passenger Side Step Bar to the Mounting Brackets using (6) M6X1-20 T-Bolts, (6) M6 Large Flat Washers and (6) M6 Nylon Lock Nuts (Fig 6). Do not fully tighten hardware at this time.



(Fig 6) Passenger Side Step Bar Installed

## STEP 7

Move to the driver side of the vehicle. Repeat **Steps 2-6** to install driver side step bar. Properly level and adjust the Step Bar and fully tighten all hardware.

### Attention

Do periodic inspections to the installation to make sure that all hardware is secure and tight.

In order to protect your bars/boards, please use only mild soap/non-abrasive products for cleaning.