

IARMOR EDGE™

PART#: IA-N313

BEFORE INSTALLATION

REMOVE CONTENTS FROM BOX. VERIFY ALL PARTS ARE PRESENT. READ INSTRUCTIONS CAREFULLY BEFORE STARTING INSTALLATION. ASSISTANCE IS RECOMMENDED. THANK YOU FOR CHOOSING OUR PRODUCT!

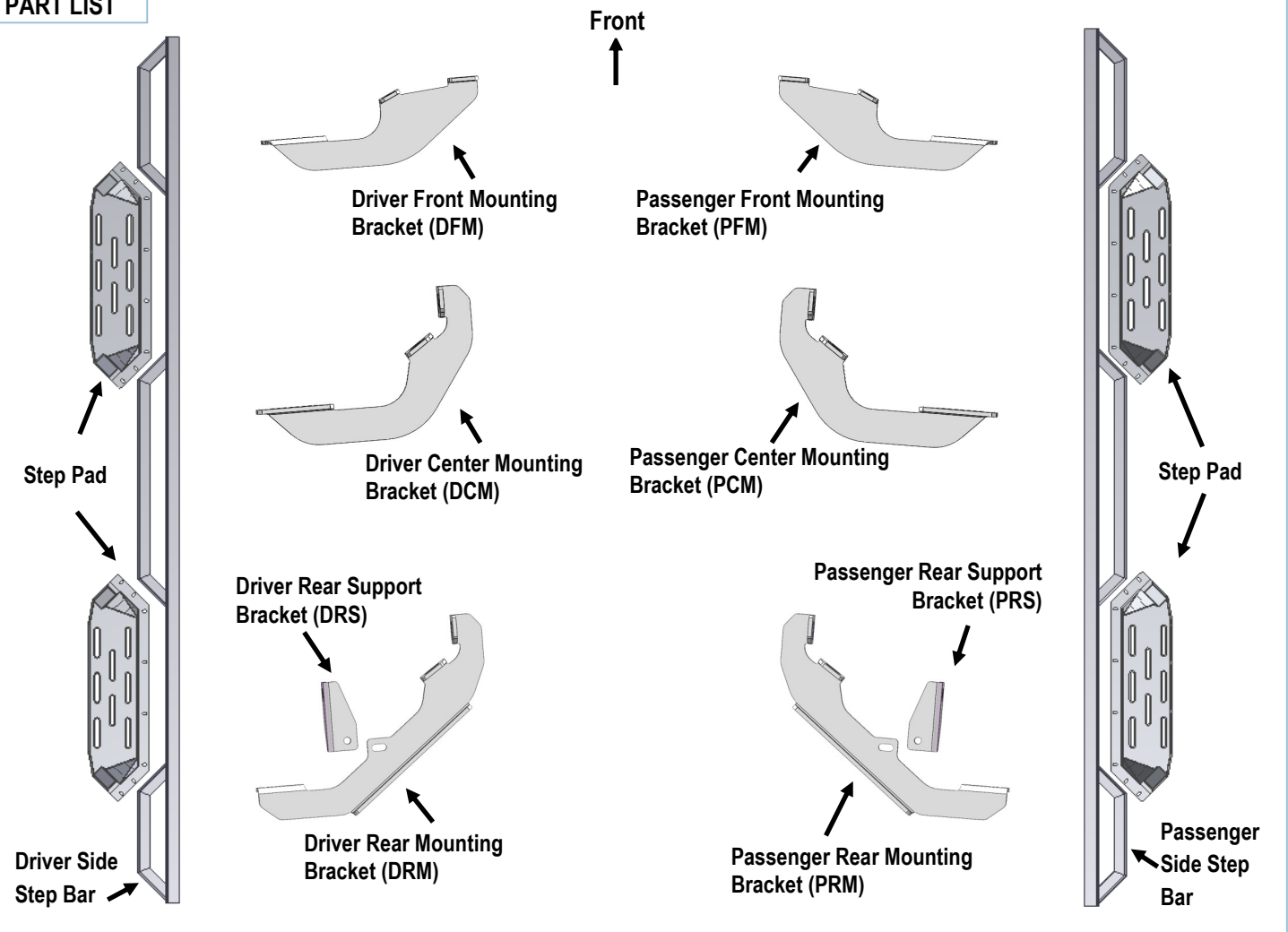
*DRILLING NOT REQUIRED

*TRIMMING NOT REQUIRED

Torque Value

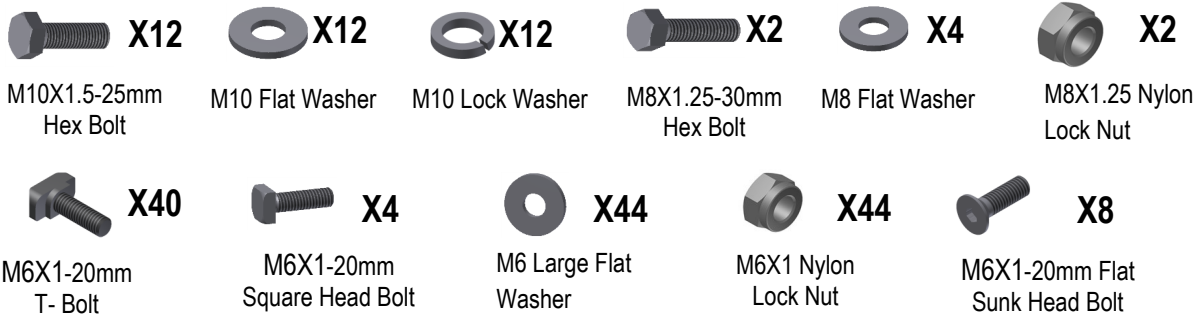
Fastener Size	Tightening Torque (ft-lbs)
6mm	6-7
8mm	16-18
10mm	31-32
12mm	56-58
14mm	92-94

PART LIST



Customer Support: info@iarmorauto.com

iArmor®

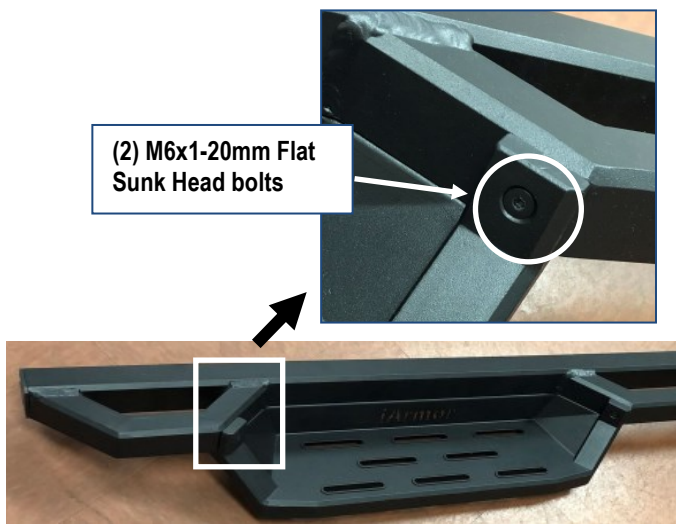


The instruction here is for your reference only. We strongly recommend the professional installer for best result. We are not responsible for any damage caused by the installation.

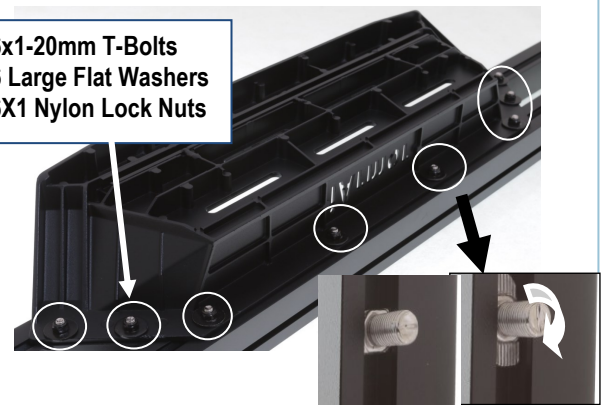
STEP 1

Install the Step Pads onto the step bars with (32) M6X1-20mm T-Bolts, (32) M6 Large Flat Washers, (32) M6X1Nylon Lock Nuts and (8) M6X1-20mm Flat Sunk Head Bolts.

IMPORTANT: Don't hit the step pad by any metal hummer within step pad installation, or the step pad will be damaged.

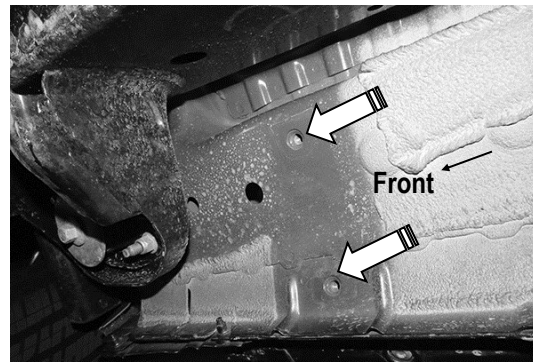


(8) M6x1-20mm T-Bolts
(8) M6 Large Flat Washers
(8) M6X1 Nylon Lock Nuts



STEP 2

Start the installation under the passenger side of the vehicle. Locate the front factory mounting location along the inner side of the body, (Fig 1).

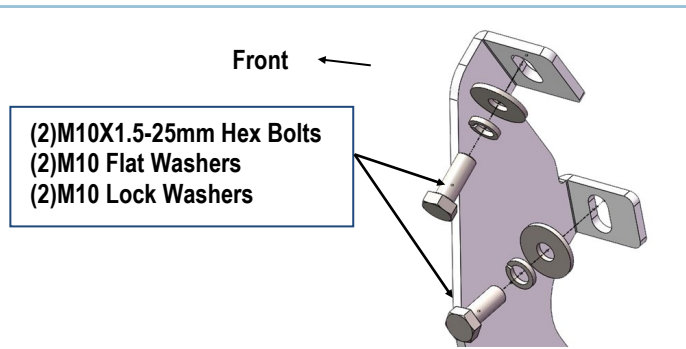


(Fig 1) Passenger Side Front Mounting Location

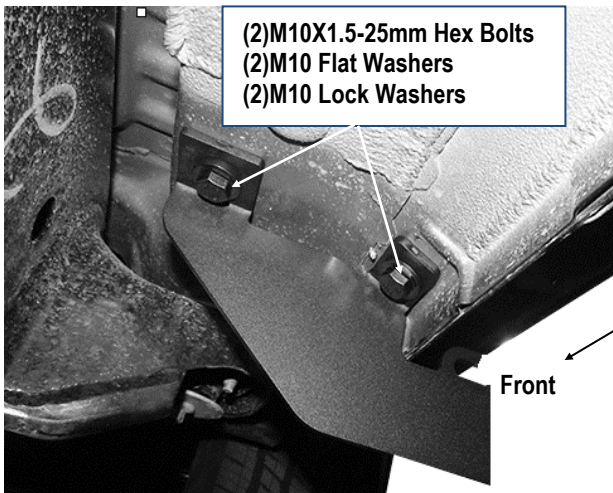
iArmor®

STEP 3

Remove the plastic plugs covering the mounting holes. Select Passenger Front Mounting Bracket (PFM) (Fig 2). Attach to Passenger side front mounting location with (2) M10x1.5-25mm Hex Bolts, (2) M10 Lock Washers and (2) M10 Flat Washers (Fig 2 & 3). Do not fully tighten hardware at this time.



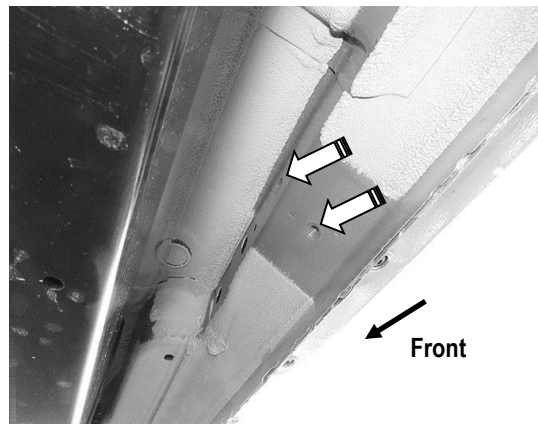
(Fig 2) Passenger Front Mounting Bracket (PFM) Installed



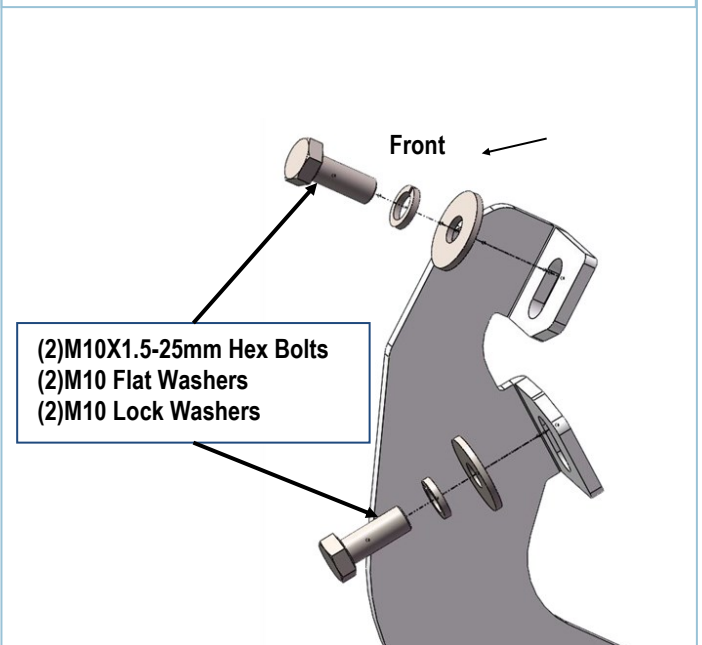
(Fig 3) Passenger Front Mounting Bracket (PFM) Installed

STEP 4

Locate the Center threaded mounting holes. Select (1) Passenger Center Mounting Bracket (PCM). Attach with (2) M10x1.5-25mm Hex Bolts, (2) M10 Lock Washers and (2) M10 Flat Washers, (Fig 4 & 5). Do not fully tighten hardware at this time.



(Fig 4) Passenger Side Center Mounting Location

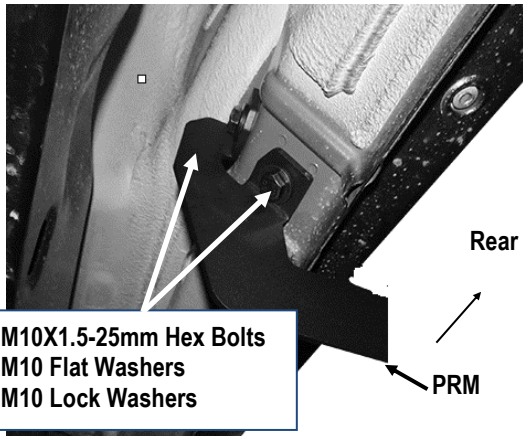


(Fig 5) Passenger Center Mounting Bracket (PCM) Installed

iArmor®

STEP 5

Repeat **Step 4** to install Passenger Rear Mounting Bracket (**PRM**), (**Fig 6**). Do not fully tighten hardware at this time.

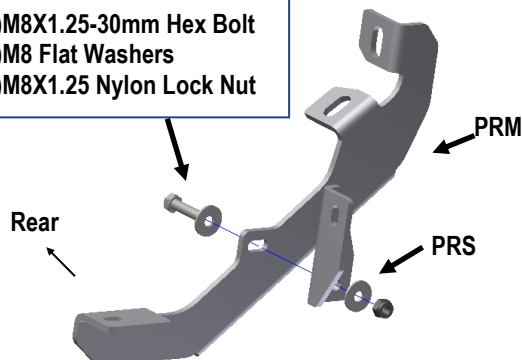


- (2) M10X1.5-25mm Hex Bolts
- (2) M10 Flat Washers
- (2) M10 Lock Washers

(Fig 6) Passenger Rear Mounting Bracket (PRM) Installed

STEP 6

Attach the Passenger Rear Support Bracket (**PRS**) to the Passenger Rear Mounting Bracket (**PRM**) with (1) M8X1.25-30mm Hex Bolt, (2) M8 Flat Washers and (1) M8X1.25 Lock Nut (**Fig 7**). Do not fully tighten hardware at this time.



- (1) M8X1.25-30mm Hex Bolt
- (2) M8 Flat Washers
- (1) M8X1.25 Nylon Lock Nut

(Fig 7) Passenger Rear Support Bracket (PRS) Installed

STEP 7

Once all (3) Brackets have been installed, attach the Assembled Passenger Side Step Bar to the Mounting Brackets with (4) M6X1-20mm T-Bolts, (2) M6X1-20mm Square Head Bolts, (6) M6 Large Flat Washers & (6) M6X1 Nylon Lock Nuts (**Fig 8**). Do not fully tighten hardware at this time.

STEP 8

Properly level and adjust the Step Bar and fully tighten all hardware.

STEP 9

Move to the driver side of the vehicle. Repeat **Steps 2-8** to install driver side step bar.

Attention

Do periodic inspections to the installation to make sure that all hardware is secure and tight.

In order to protect your bars/boards, please use only mild soap/non-abrasive products for cleaning.

iArmor[®]

(Fig 8) Passenger Side Step Installation

