

iBoard®

iBoard® by APS

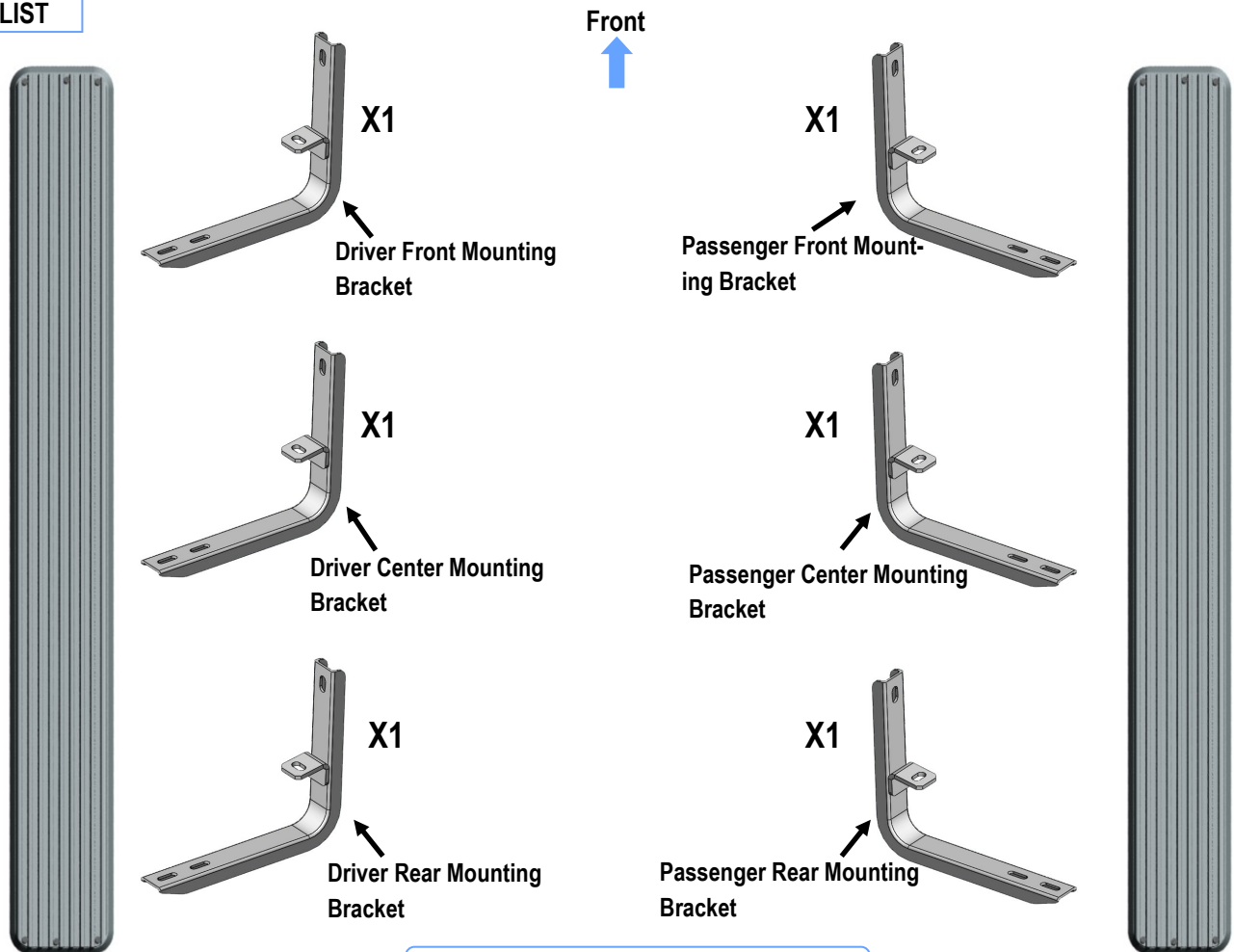
PART#: IB-295A-B

READ INSTRUCTIONS CAREFULLY BEFORE STARTING INSTALLATION. REMOVE CONTENTS FROM BOX AND VERIFY ALL PARTS ARE PRESENT. ASSISTANCE IS RECOMMENDED.

*ROCKER PANEL MOUNT
*NO DRILLING REQUIRED

Fastener Size	Tightening Torque (ft-lbs)
6mm	6-7
8mm	16-18
10mm	31-32
12mm	56-58
14mm	92-94

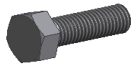
PART LIST



Note: (6) Mounting Brackets Are Universal

Customer Support: info@iboardauto.com

iBoard®



X12

M8X1.25-30mm Hex Bolt



X12

M8 Flat Washer



X12

M8 Lock Washer



X12

M6X1-20mm Square Head Bolt



X12

M6 Large Flat Washer



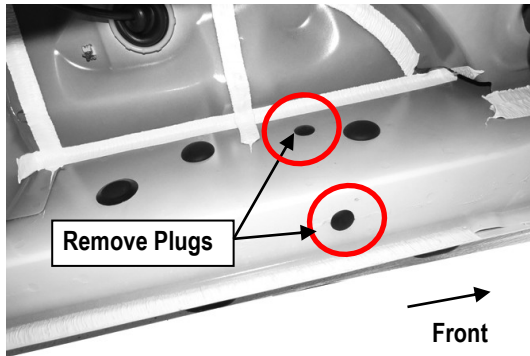
X12

M6X1 Nylon Lock Nut

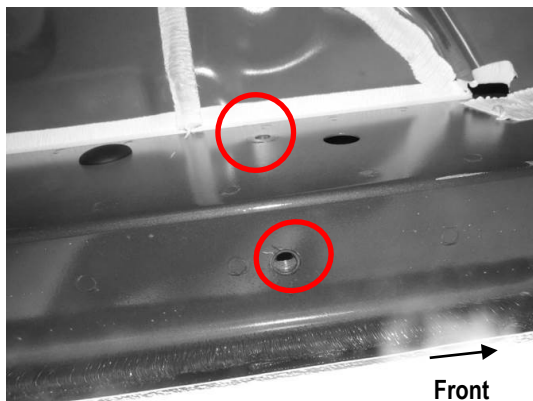
STEP 1

Starting on the Driver Side Front of the vehicle. Locate the (6) plugs along the bottom edge of the body. Remove the plastic plugs from each mounting location.

NOTE: Thread (1) M8X1.25-30mm Hex Bolt into the threaded inserts on the rocker panel to clear paint as required (**Fig 1 & 2**)



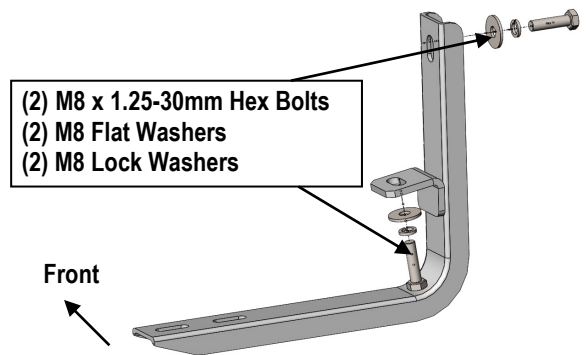
(Fig 1) The Plastic Plugs on Driver Side Mounting Location (Inner Side of Rocker Panel)



(Fig 2) Driver Front Mounting Bracket Location

STEP 2

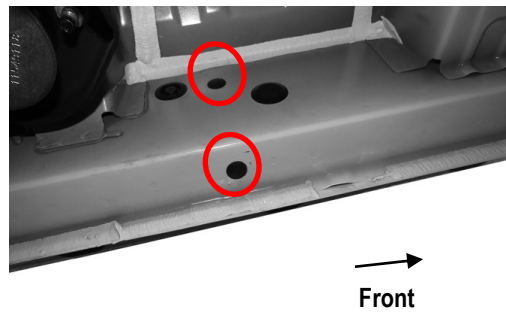
Bolt the Driver Front Mounting Bracket to the factory threaded holes with (2) M8x1.25-30mm Hex Bolts (2) M8 Lock Washers and (2) M8 Flat Washers (**Fig 3**). Don't fully tighten the hardware at this time.



(Fig 3) Driver Front Mounting Bracket Installation

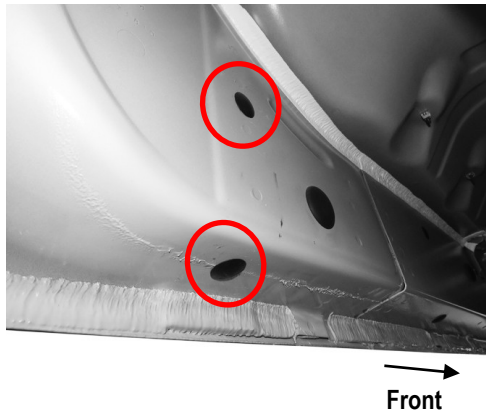
STEP 3

Move the Driver side center and rear mounting location (**Fig 4 & 5**). Repeat **Steps 1-3** to install the Mounting Brackets. **Note:** (6) Mounting Brackets Are Universal.



(Fig 4) Driver Center Mounting Bracket Location

iBoard®



(Fig 5) Driver Rear Mounting Bracket Location

STEP 4

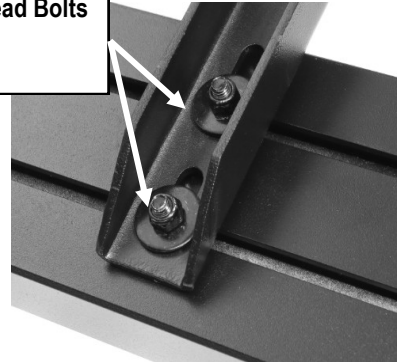
Select a Running Board. Slip (3) M6x1-20mm Square Head Bolts into each bottom channel (Fig 6). Carefully position the Running Board onto the (3) Mounting Brackets.

IMPORTANT: Do not slide the Running Board on the Brackets or the bottom surface of the board will be damaged. Attach the Running Board to each Mounting Brackets with (2) M6x1-20mm Square Head Bolts, (2) M6 Large Flat Washers and (2) M6 X1 Nylon Lock Nuts (Fig 7). Do not fully tighten at this time.



(Fig 6) Slip M6X1-20mm Square Head Bolts Into The Bottom Channels

(2)M6X1-20mm Square Head Bolts
(2)M6 Large Flat Washers
(2)M6X1 Nylon Lock Nuts



(Fig 7) Running Board Installed Onto Mounting Bracket

STEP 5

Level and adjust the Running Board and fully tighten all hardware.

STEP 6

Repeat **Steps 1-5** for the other side Running Board installation. The installation is completed (Fig 8).



(Fig 8) Installation Completed

Attention

Do periodic inspections to the installation to make sure that all hardware is secure and tight.

In order to protect your bars/boards, please use only mild soap/non-abrasive products for cleaning.